

## NFF Agribusiness Loan Monitor: February 2014

The National Farmers' Federation (NFF) *Agribusiness Loan Monitor* compares the movement in agribusiness loan rates of the major banks and other financial institutions to shed light on bank rates and products. This tool is designed to help farmers and rural business operators to make decisions regarding banking products.

The objective of the monitor is to track the relative movement in interest rates. The products included in these tables give the best like for like comparison for this purpose and are not meant as a comprehensive listing of all products offered by the institution to primary producers. The *Agribusiness Loan Monitor* is released each month following the Reserve Bank of Australia rate announcements. The NFF provides this valuable tool to all Australian farmers in partnership with Canstar.

### Agri Term Loans

Company	Product	Change from Dec 2013 to Jan 2014*	Change from Jan to Feb 2014*	2012 to 2013 financial year NB: RBA cut – 0.75%	2013 to 2014 financial year NB: RBA cut – 0.25%
ANZ Agribusiness	Bus Loan Var (Bus Asset)	No change	No change	0.65% decrease	0.25% decrease
BankSA Agribusiness	Agri Bus Loan Variable	No change	No change	0.60% decrease	0.25% decrease
BankWest Agribusiness	Business Low Rate Loan (All Sec)	No change	No change	0.40% decrease	0.25% decrease
Bendigo Bank	Term Loan	No change	No change	0.55% decrease	0.25% decrease
CommBankAgri	Agribusiness Variable Loan	No change	No change	0.60% decrease	0.25% decrease
nab Agribusiness	Bus Opts InstalVarStd	No change	No change	0.65% decrease	0.25% decrease
SuncorpAgri	Business Essentials	No change	No change	0.64% decrease	0.25% decrease

### Agri Overdrafts

Company	Product	Change from Dec 2013 to Jan 2014*	Change from Jan to Feb 2014*	2012 to 2013 financial year NB: RBA cut – 0.75%	2013 to 2014 financial year NB: RBA cut – 0.25%
ANZ Agribusiness	Revolving Agri Line	No change	No change	0.65% decrease	0.25% decrease
BankSA Agribusiness	Agri Business Maximiser	No change	No change	0.60% decrease	0.25% decrease
BankWest Agribusiness	AgriOne Overdraft	No change	No change	0.50% decrease	0.25% decrease
Bendigo Bank	Seasonal Overdraft	No change	No change	0.55% decrease	0.25% decrease
CommBankAgri	Agribusiness Overdraft	No change	No change	0.60% decrease	0.25% decrease
nab Agribusiness	Farmers Choice OD	No change	No change	0.65% decrease	0.25% decrease
SuncorpAgri	Business O/D	No change	No change	0.40% decrease	0.25% decrease
Westpac Agribusiness	Agribusiness Overdraft	No change	No change	0.63% decrease	0.25% decrease

Source: [www.canstar.com.au](http://www.canstar.com.au). February data current 21 February 2014.

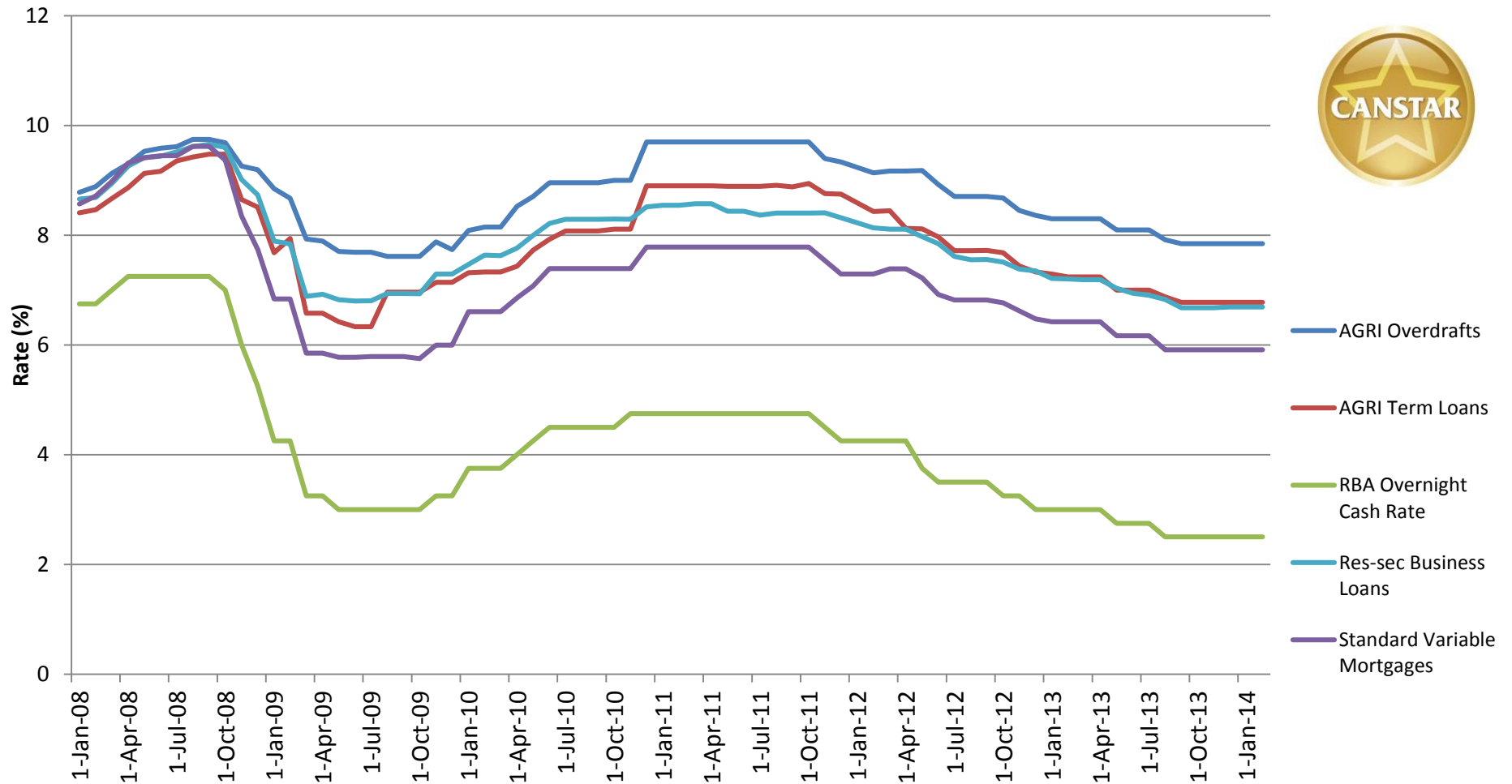
Notes to tables:

- Each loan has a different set of fees, features and benefits which should be considered in addition to interest rate when choosing a loan.
- \*Change from base rate where applicable.

# NFF Agribusiness Loan Monitor: February 2014



## Average Lending Rates:



Source: [www.canstar.com.au](http://www.canstar.com.au), base rates used where applicable, risk margins may apply.